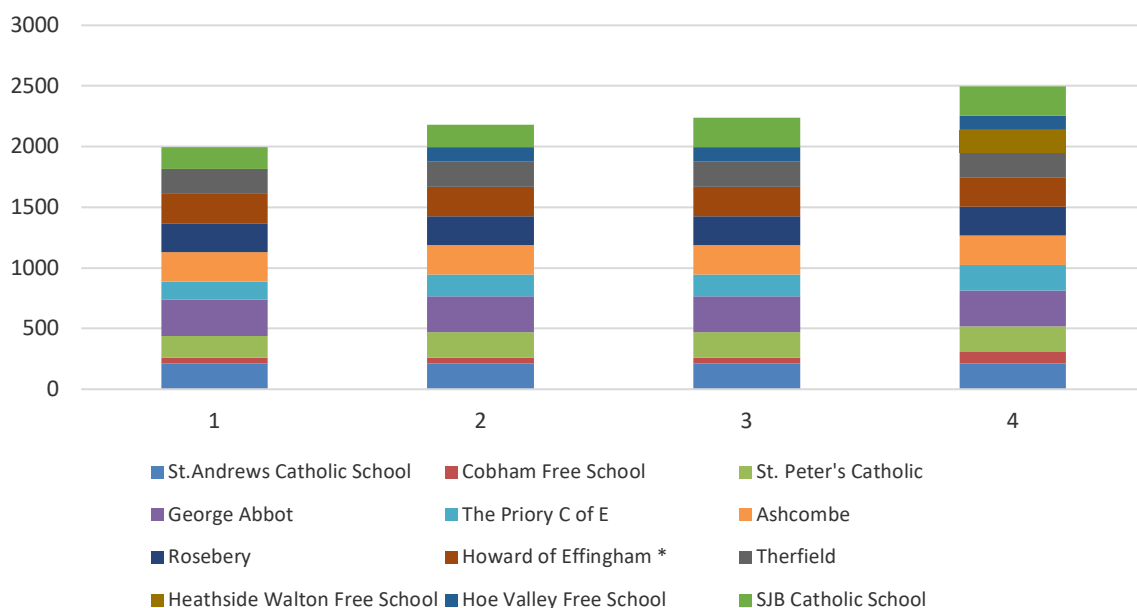


## Analysis of Schools Data taken from Surrey Schools' Operation Plan 2018-2027

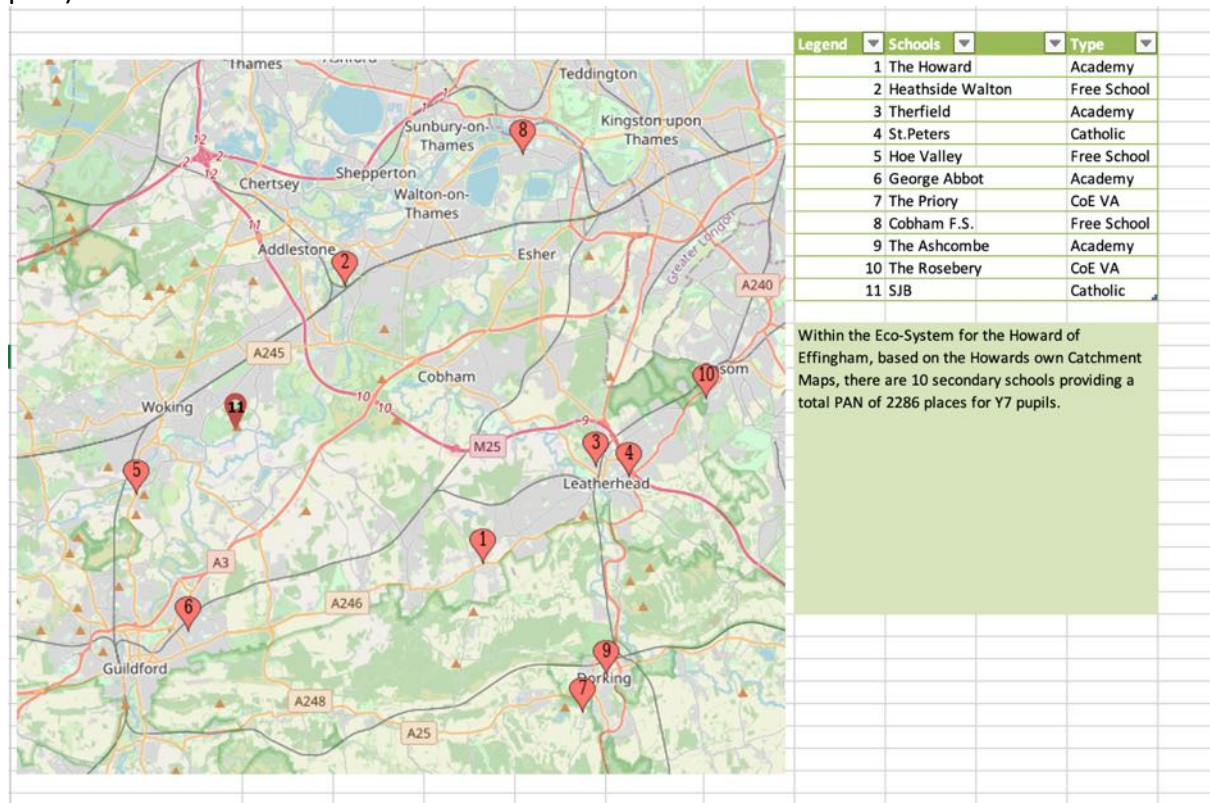
### Expansion of PAN

School	2016	2017	2020	2021	2022
St.Andrews Catholic School	210	210	210	210	
Cobham Free School	48	48	48	96	
St. Peter's Catholic	180	210	210	210	
George Abbot	300	300	300	300	
The Priory C of E	150	180	180	210	
Ashcombe	240	240	240	240	
Rosebery	240	240	240	240	
Howard of Effingham *	240	240	240	240	
Therfield	210	210	210	210	
Heathside Walton Free School				180	
Hoe Valley Free School		120	120	120	
SJB Catholic School	180	180	240	240	
	<b>1998</b>	<b>2178</b>	<b>2238</b>	<b>2496</b>	<b>2496</b>
				498	
Source: Surrey School's organisation plan 2018-2027					
	2016		2020	2021	Change
	Places	Share			
					11.6
Free Schools	48		168	396	348
Academy	750		750	750	0
Catholic	360		450	450	90
CoE VA	150		180	210	60
Community Comprehensive	240		240	240	0
All Girls	240		240	240	0
Faith	510		630	660	150
				2946	

There are an additional 498 places available to children living within and around the HoE catchment areas - a 28% increase since 2016.



## Expansion of PAN in Free and Faith Schools (Numbers from 2018-2027 Schools organisation plan)



### KEY

- Schools 2, 8, 5 are newly created Free Schools that have added 396 places (13 Forms of Entry)
- Faith Schools at 4, 7 and 11 have added a further 150 places (5 Forms of Entry)