

# BULLETIN

ROUNABOUT EFFINGHAM aims to provide an independent platform to facilitate communication between residents of Effingham and the businesses, persons, and organisations active within Effingham and its Neighbourhood (such as shops, charities, churches, schools, clubs and associations) and help them to get to know more about and engage with each other to their mutual benefit.

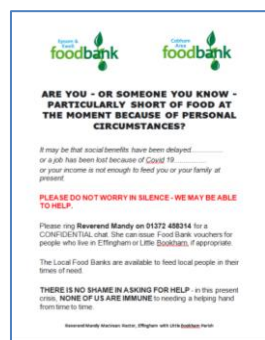
To subscribe send **ENROL** to [effinghameditor@gmail.com](mailto:effinghameditor@gmail.com)

## Parker's is not "open all hours".....but it is open again!

Following a short closure Parker's Home Hardware reopened on Wednesday. Opening times as before are 10am-1pm Mon- Sat. Closed this Friday for VE day bank holiday and Sundays as previously.

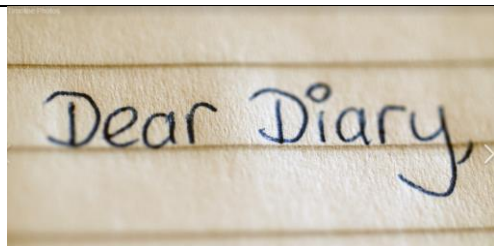
Whilst the sun shines Barry and Cheryl's adoption of outdoor trading is a sensible precaution. They will delve into the Labyrinth and locate what you are looking for. During lock down it's tempting to use Amazon and Robert Dyas but before you do, give Parker's a call, there is not much they don't carry or can't get in.

Call 01372 454034 first



## Those in real need are often the last to ask.

If you could display the attached poster on a fence, in your window, on your car or drop a few around to your neighbours then the two food banks that serve the area will have a better chance to reach those in need. Be assured that Rev Mandy (01372 458314) can react quickly to give access to the correct Foodbank.



<https://www.facebook.com/HomeCountiesCarers/posts/1130206690672101>

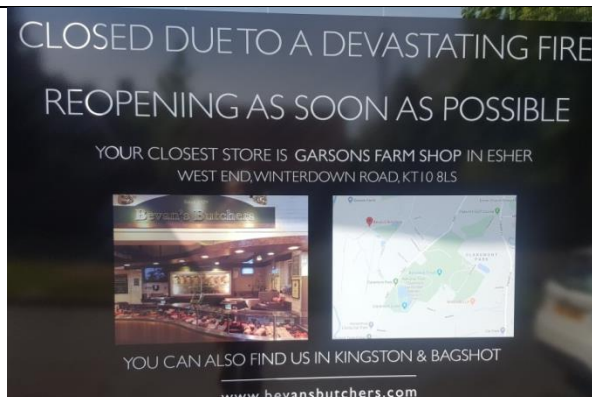
**Home Counties Carers** who work with the elderly highlight that their clients are living in isolation at the moment and many are feeling lonely as they can't see their families or loved ones as they'd usually do.

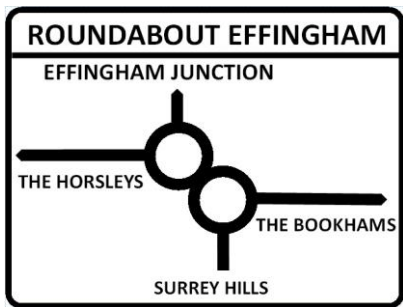
Ingrid Clift has asked that we bring attention to this Facebook page and share it. She says "It was originally designed for children but adults have contacted me too to find out if they could write letters too or keep a diary and I thought - why not... So thought that perhaps some of your readers might like to get involved." [iclift@homecountiescarers.co.uk](mailto:iclift@homecountiescarers.co.uk)

## Bevan's Butchers

A new poster in Bevan's window is informing its customers of arrangements following their fire closure. Steve at Bevan's Butchers informs us that "Our Effingham staff have been moved to Garson's Farm Shop in Esher to minimize business interruption and give customers faces that they will recognise. Garson's are also operating an **email collect service**. Customers can email and order, pay for it over the phone and they can have it delivered to their car in Garsons car park.

For details <https://www.garsons.co.uk/about-us/corona-covid-19-update>





# BULLETIN

ROUNABOUT EFFINGHAM aims to provide an independent platform to facilitate communication between residents of Effingham and the businesses, persons, and organisations active within Effingham and its Neighbourhood (such as shops, charities, churches, schools, clubs and associations) and help them to get to know more about and engage with each other to their mutual benefit.

To subscribe send **ENROL** to [effinghameditor@gmail.com](mailto:effinghameditor@gmail.com)



## The Village Supermarket

We understand from Louise Wishart that this sign was generously **donated** by  
OMG Graphics

[www.facebook.com/omgraphicsigns/](http://www.facebook.com/omgraphicsigns/)

To all our much valued customers, Sadly on the 21st April we suffered a fire on our premises which has caused extensive damage to the shop and stockrooms. Thankfully no-one was injured, but regrettable our store will remain closed for the foreseeable future. We have been overwhelmed by the support and kindness shown to us by the local community and will endeavour to get the shop up and running as soon as we can.



## Bonfires

Notices have appeared asking that bonfires be restricted. Given the fine weather, the daily exercise routines so many of us are following these seem only reasonable. Consideration for others is high at the moment and I'm sure we would like to see that extend to bonfires.

GBC offer the following advice

[www.guildford.gov.uk/article/18341/Bonfires-and-smoke](http://www.guildford.gov.uk/article/18341/Bonfires-and-smoke)

## Surrey Libraries

Jenny Hollingshead, Duty Manager reports that "Most of our assistants are making use of their time catching up on the latest training, emails, or volunteering. Some have been redeployed. Some are making scrubs for the hospitals. We are all still gainfully employed and planning events for when we open again. Hope you are well and keeping safe."

*One of those assistants has put pen to paper writing some impressive poetry that we hope to make available once we know the copyright position.*



## STOP PRESS - Message Sent By

Aga Kasprzyk (Corp Comms, Coordinator, [Surrey Police](http://www.surreypolice.co.uk))

Normally VE Day would be a jubilant day of community pomp and celebration... but this year? Sadly not. The restrictions don't mean we can't celebrate and remember, they just mean we have to be a bit more innovative...so here are some ideas for ways to celebrate VE Day while following the #StayHomeSaveLives guidance:  
Before the day: Download a bunting template and colour, stick, cut or sew your own with the kids  
<https://www.bbc.co.uk/programmes/articles/4TrqYDyf4PMdLypxzyTwGDg/great-british-bunting>

- ✓ At 11am pause for a 2-minute silence (on the doorstep, not the cenotaph) to remember those who lost their lives. <https://www.veday75.org/>

Just received from [www.neighbourhoodalert.co.uk](http://www.neighbourhoodalert.co.uk)

- ✓ At 11:15am join the Royal British Legion's lives stream <https://www.britishlegion.org.uk/stories/ve-day-75-livestream>
- ✓ At 3pm raise a cup of tea, glass of wine or beaker of squash to the heroes of WW2 in the 'Nation's Toast' <https://www.veday75.org/get-involved/nations-toast/>
- ✓ At 9pm sing along to Vera Lynn's 'We'll meet again' on BBC One. <https://www.britishlegion.org.uk/stories/ve-day-singalong>

If you are planning a garden party (no street parties, sorry!), keep it to household members only, and within your own garden. You can speak to your neighbours...but stay 2 metres apart. Large groups could lead to us being called to break up the gathering – not really what any of us want! We'll meet again – but just not yet!